

9/16" EZ STAB TIER DROP SYSTEM

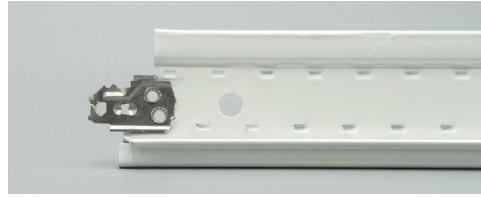
Acoustical Suspension Systems

Create a smooth transition from ceiling to walls with wall angle products. Choose standard wall angles for popular interior designs or incorporate shadow moldings along perimeters for a reveal-edge look.

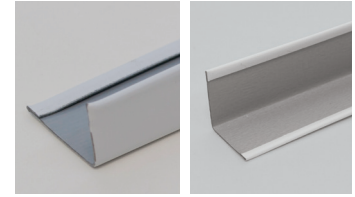
MAIN RUNNER



CROSS TEE



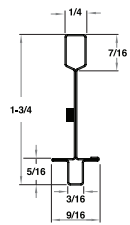
9/16" | 7/8" WALL ANGLE



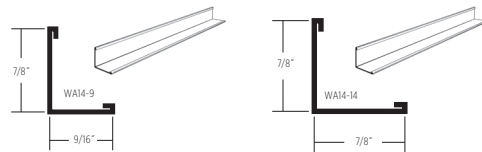
FEATURES AND BENEFITS

- Narrow 9/16" face features a 3/16" wide center bulb to create a double 1/8" wide reveal and compatible with certain Narrow Reveal Edge and all Trim Edge panels
- New EZ Stab clip technology allows for a fast and strong connection on cross tees with added removability
- Centering tab on web for use with Trim Edge ceiling panels
- Double-stitched web design for lasting durability and strength
- Unlimited intersections for flexible cross tee placement
- Grid features fully painted and G30 hot-dipped galvanized steel construction for corrosion resistance
- Intermediate- and heavy-duty certified profiles available for all seismic applications
- ICC certified (ESR-3336) and compliant with L.A. Research Report number 25978
- Available in Standard White. Additional color options are offered through our Post-Paint process. See the Visual Options - Suspension Systems page for color option details.

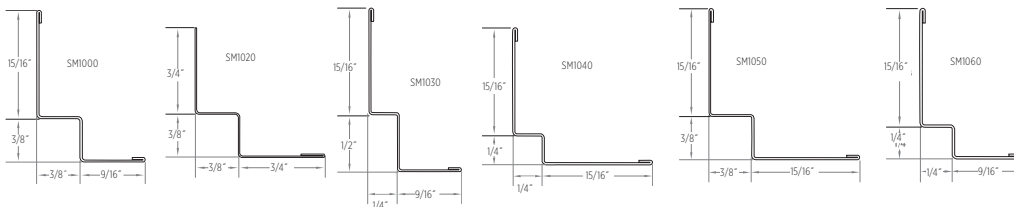
MAIN RUNNER



WALL ANGLE



SHADOW MOLDING



LEED® v4

RECYCLED CONTENT

MAIN RUNNER

PRE: 0% POST: 0% TOTAL: 0%

CROSS TEE

PRE: 0% POST: 0% TOTAL: 0%

✓ MR: PBT Source Reduction (Healthcare)

✓ MR: Material Ingredients (HPDs)

✓ MR: Sourcing Raw Materials

✓ MR: Environmental Product Declarations (EPDs)

✓ MR: Construction and Demolition Waste Management Planning

9/16" EZ STAB TIER DROP SYSTEM

Acoustical Suspension Systems

	Grid Face (in.)	Dimensions (in.)	Slot Spacing (in.)	Pieces/carton	Ft./carton	Seismic Design Category	Structural Classification (ASTM C635)	Recycled Content PRE*	Recycled Content POST*	Recycled Content TOTAL*	Allowable Uniform Load (plf)	Allowable Concentrated Load at midspan (lbf)**
MAIN RUNNER												
EZTD12-14-18	9/16	144 x 1-3/4 x 9/16	6 O.C.	20	240	A-F	HD	—	—	—	16.5	41.2
EZTD12-14-15	9/16	144 x 1-3/4 x 9/16	6 O.C.	20	240	A-C	ID	—	—	—	15	37.5
CROSS TEE												
EZTD2-14-18	9/16	24 x 1-3/4 x 9/16	—	60	120	—	HD	—	—	—	75.8	75.8
EZTD2-14-15	9/16	24 x 1-3/4 x 9/16	—	60	120	—	ID	—	—	—	55.8	55.8
EZTD2.5-14-15	9/16	30 x 1-3/4 x 9/16	—	60	150	—	ID	—	—	—	42	52.5
EZTD4-14-18	9/16	48 x 1-3/4 x 9/16	12 O.C.	60	240	—	HD	—	—	—	16.5	41.2
EZTD4-14-15	9/16	48 x 1-3/4 x 9/16	12 O.C.	60	240	—	ID	—	—	—	15	37.5
EZTD5-14-15	9/16	60 x 1-3/4 x 9/16	12 O.C.	60	300	—	ID	—	—	—	7.8	24.4
EZTD5-14-15-3S	9/16	60 x 1-3/4 x 9/16	3 slots at 20, 30, 40 O.C.	60	300	—	ID	—	—	—	7.8	24.4
EZTD6-14-15	9/16	72 x 1-3/4 x 9/16	12 O.C.	20	120	—	ID	—	—	—	4.6	17.2
EZTD8-14-15	9/16	96 x 1-3/4 x 9/16	12 O.C.	20	160	—	ID	—	—	—	2.0	10.0
WALL ANGLE												
WA14-9	9/16	144 x 7/8 x 9/16	—	40	480	—	—	19%	69%	88%	—	—
WA14-14	7/8	144 x 7/8 x 7/8	—	40	480	—	—	19%	69%	88%	—	—
WA14-14-10	7/8	120 x 7/8 x 7/8	—	40	480	—	—	19%	69%	88%	—	—
WA32-32	2	120 x 2 x 2	—	20	200	—	—	19%	44%	53%	—	—
WA32-32-12	2	144 x 2 x 2	—	20	240	—	—	19%	44%	53%	—	—
WA32-15	2	120 x 15/16 x 2	—	20	200	—	—	19%	44%	53%	—	—
WA32-15-12	2	144 x 15/16 x 2	—	20	240	—	—	19%	44%	53%	—	—
SHADOW MOLDING												
SM1000	—	120 x 3/4 x 3/8 x 3/8 x 9/16	—	40	400	—	—	19%	69%	88%	—	—
SM1020†	—	120 x 15/16 x 3/8 x 3/8 x 3/4	—	40	400	—	—	19%	69%	88%	—	—
SM1030	—	120 x 15/16 x 1/2 x 1/4 x 9/16	—	40	400	—	—	9%	44%	53%	—	—
SM1040	—	120 x 15/16 x 1/4 x 1/4 x 15/16	—	40	400	—	—	9%	44%	53%	—	—
SM1050	—	120 x 15/16 x 3/8 x 3/8 x 15/16	—	40	400	—	—	9%	44%	53%	—	—
SM1060	—	120 x 15/16 x 1/4 x 1/4 x 9/16	—	40	400	—	—	9%	44%	53%	—	—

† SM1020 is not hemmed along 3/4" side.

*Maximum recycled content percentage. Recycled content varies by manufacturing location.







**Allowable concentrated loads at midspan are determined in accordance with AC308 Section 3.2. For each framing member, the allowable concentrated load must not be combined with the allowable uniform load.

Use standard 9/16" Wall Angle and Shadow Molding

9/16" EZ STAB TIER DROP SYSTEM

Acoustical Suspension Systems

ACCESSORIES

	Item Number	Product Name	Dimensions L" x W" x H" (mm)	Pieces/ carton	Lbs./ carton
SEISMIC	 CTSPC-2	Seismic Perimeter Clip	3-1/16 x 2-1/4 x 1-1/16 (78 x 58 x 27)	100	9
	 CTSTJ	Seismic Transition Joint Clip	3-1/2 x 3-1/2 x 1-3/16 (89 x 89 x 31)	100	10
	 SLEEVE TD	Tier Drop Seismic Sleeve	3 x 9/16 x 3/8 (76.2 x 14.3 x 9.5)	100	1
STANDARD	 AHD	Adjustable Hold Down Clip	1-1/8 x 1/2 x 1-11/16 (29 x 13 x 43)	1000	16
	 HW12	Hanger Wire 12" (3660 mm) 12 Gage (2.05 mm)	144 x 12 gage x 12 gage (3658 x 12 gage x 12 gage)	141	50
	 SFYK	SmartFit Yoke	8.55 x 1.25 x 9.56 (217 x 32 x 243)	20	9

PHYSICAL DATA

MATERIAL

Fully painted and hot dipped galvanized steel (G30)

FACE DIMENSION

9/16"

CROSS TEE/MAIN RUNNER INTERFACE

Override

DUTY CLASSIFICATION

Heavy duty and Intermediate duty per ASTM C635

SURFACE FINISH

Fully Painted

PROFILE HEIGHT

1-3/4"

END DETAIL

Main Runner: Integral Stab
Cross Tee: Staked-on Stab Clip

SEISMIC RATING

A, B, C, D, E, F

WARRANTY

10-year Limited Suspension Systems warranty increases to 15 years when installed with CertainTeed Ceiling Panels. Full warranty information can be found at certainteed.com/ceilings.

SEISMIC PERFORMANCE

MAIN RUNNERS:

EZTD12-14-18, EZTD12-14-15

MINIMUM LBS. TO PULLOUT

COMPRESSION/TENSION:
180 lbs.

CROSS TEES:

CS12-12, CS4-12-20. All cross tees are tested to exceed minimum required compression and tension of 180 lbs.

ICC EVALUATION SERVICE, INC., REPORT COMPLIANCE

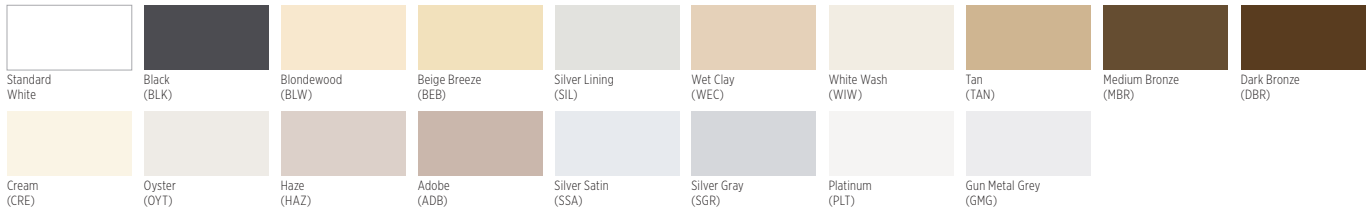
Suspension systems manufactured by CertainTeed Ceilings have been reviewed and are approved by listing in ICC-ES Evaluation Report ESR-3336. CertainTeed Ceilings suspension systems have been reviewed and are approved by listing in L.A. Research Report number 25978. Evaluation Reports are subject to reexamination, revision and possible cancellation. Refer to certainteed.com/ceilings for current reports.

VISUAL OPTIONS - SUSPENSION SYSTEMS

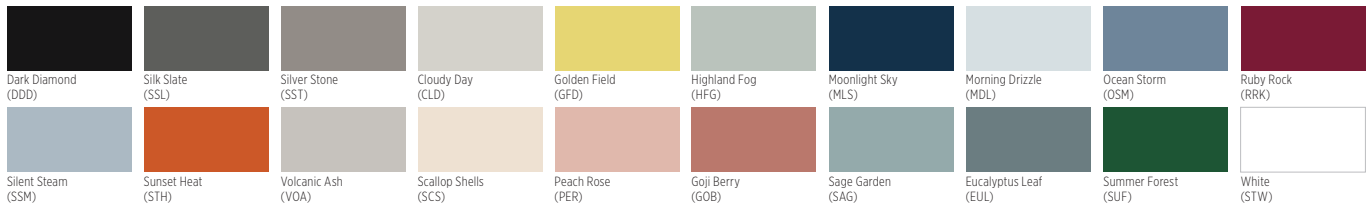
ACOUSTICAL AND DRYWALL SUSPENSION SYSTEMS AND TERMINUS TRIM

Our newly expanded post-paint process allows for any CertainTeed Suspension System product to be painted in a variety of new colors, matching all CertainTeed colors along with any Sherwin-Williams® colors requested by the customer. We can also match any color if a color sample is provided.

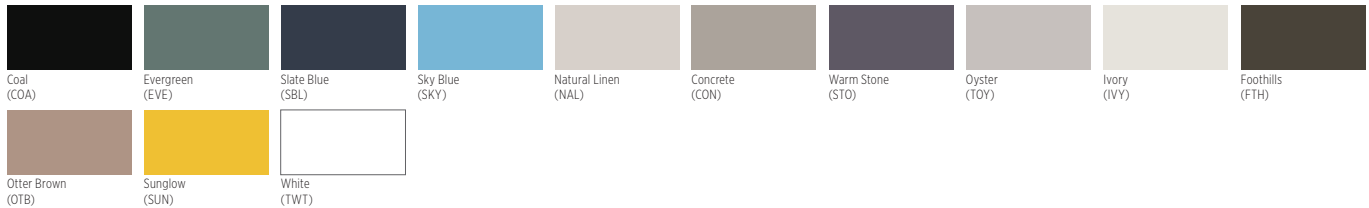
CertainTeed Standard



Ecophon®



Techstyle Color



Techstyle Wood



Techstyle Felt

Metal Ceilings



For Special color options, contact your local sales representative.

The colors shown have been reproduced with all the fidelity possible with commercial printing processes. Also, a specific color may appear different on one class of product than another.

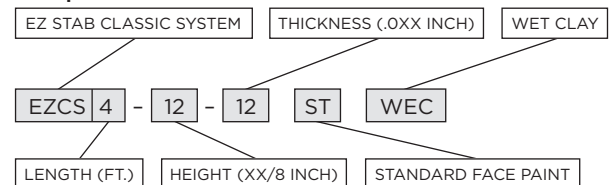
When placing an order for either Standard or Special colors, please use the following naming process preceding each catalog code:

- Standard face paint: ST + 3-letter color code
- Standard 360 paint: 3T + 3-letter color code
- Special face page: SP + 3-letter color code
- Special 360 paint: 3P + 3-letter color code

Example:

EZCS4-12-12 ST WEC

Example: EZCS4-12-12 ST WEC



CertainTeed ARCHITECTURAL

METAL • WOOD • FELT • FIBERGLASS & MINERAL FIBER • GYPSUM • SUSPENSION & INTEGRATED SYSTEMS
 20 Moores Road, Malvern, PA 19355 800-387-3809 CertainTeed.com/Architectural